



# Building In PrairieView

## What is a Tax Increment Financing (TIF) District?

In PrairieView, the infrastructure – road, utilities, streetlights – are paid through Tax Increment Financing (TIF).

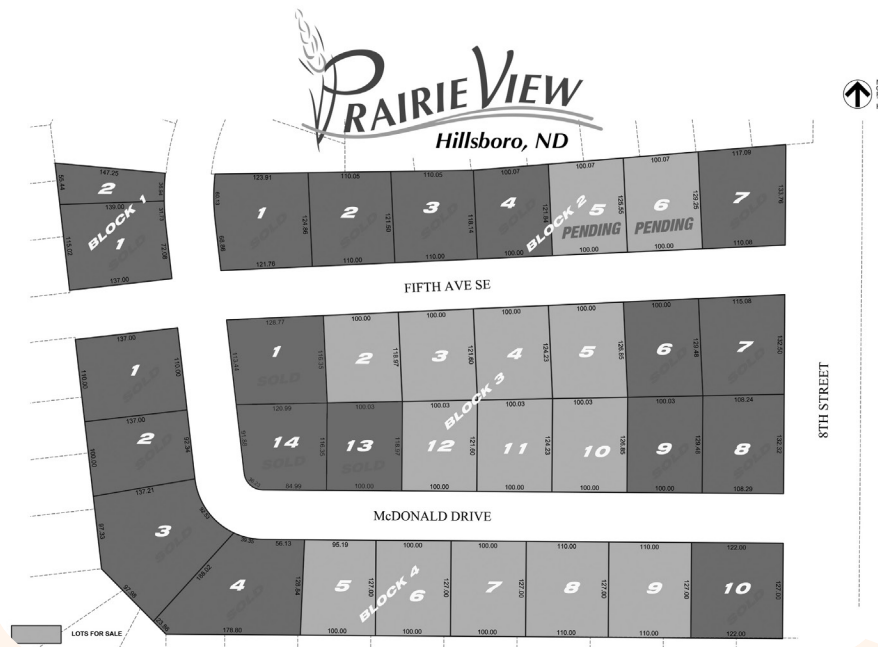
Each lot in PrairieView was assessed a dollar value, known as a special assessment. Lots are also assessed real estate taxes for school, city, and county.

In Hillsboro's PrairieView, the school and county have waived real estate taxes until 2022!

## What does this mean for you?

When you build a home in PrairieView, the benefits of the TIF come into play. All the taxes collected on your home and lot are paid to the city to pay for the infrastructure that was put in place when PrairieView was first developed.

As a homeowner in PrairieView, you will pay either the real estate taxes on your property or the special assessments – whichever is higher – but you will not pay both.



## Building in PrairieView saves you taxes until 2022!

For more information about the TIF District in PrairieView, go to [acupofcoffeeaway.com](http://acupofcoffeeaway.com) or call the Hillsboro City Auditor at 701.636.4620.