

Hillsboro, North Dakota



# Your New Home

Hillsboro has a variety of housing options to fit your lifestyle. Housing in Hillsboro is plentiful and varied with single family homes, twin homes, and apartments, plus lots to build your perfect place. Come experience Hillsboro and check out all the housing options available. Call a realtor to check out homes available, or call The Idea Shop at 701-636-2104 to get a local perspective of Hillsboro with the Coffee Crew!

## **PrairieView Addition**

Welcome to Prairie View! Our newest housing development is located close to Hillsboro Elementary School. You and your design team will have fun constructing your perfect home. Prairie View lots range in price from \$10,000 to \$12,500 and are open to all construction companies. With utility and communication lines in place, these lots are ready for your dream home. PrairieView is located in a TIF district. This helps defray the costs of special assessments! Join the new neighborhood in town where the streets are paved, safety is the priority, and neighbors gather to create memories. For more information regarding PrairieView, contact Gary Leraas, Goose River Realty at 701-430-1775.



## **Comstock Corner**

Located at 12 Third Street Southeast, Comstock Corner allows residents to live independently while still having assistance when they need it. With beautiful landscaping and daily activities, everyone can enjoy the lifestyle at Comstock Corner. Plus, Comstock Corner is part of the Sanford Hillsboro Medical Center, so all medical services – clinic, hospital, and ambulance are under one roof.

For more information on Comstock Corner, contact Joyce Smelden at 701-636-3266.

## **Apartments:**

### **2nd Avenue Apartments**

Dan & Eileen Grabanski, Managers 612-275-4869

### **Countryside Apartments**

Dan & Eileen Grabanski, Managers 612-275-4869

Jacque Stockman 701-212-1120

**Hill House** - Lori Meske, Manager 701-636-5634

### **Hillsboro Manor**

Larry Whetzel, Manager 701-636-5620

**K&L Olson, LLP** - Linda, Owner 218-367-5196

**ASA Property Management** - 1-888-710-7764

(income guidelines apply)

**Southern Manor** - Jay Carlson 701-772-5832

**Trail County Housing Authority** - 701-436-5785

### **Westphal Apartments**

Shirley Westphal, Owner 701-436-5817

## **Hillsboro Mobile Home Park:**

Nancy Olson 701-436-5319

## **Senior Housing Options:**

### **Comstock Corner**

Joyce Smelden, Manager 701-636-3266

**Kelleher Manor** - Helen Grothmann 701-636-4353

**Kiwanis Housing** - Arleeta Foss 701-636-5945

## **Houses For Rent:**

Cindy or Andy Nordick 701-361-5795

## **Realtors:**

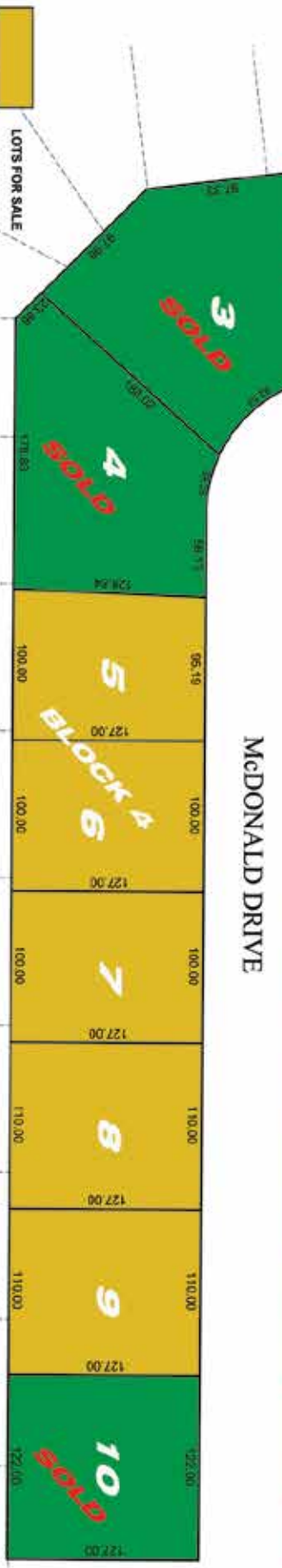
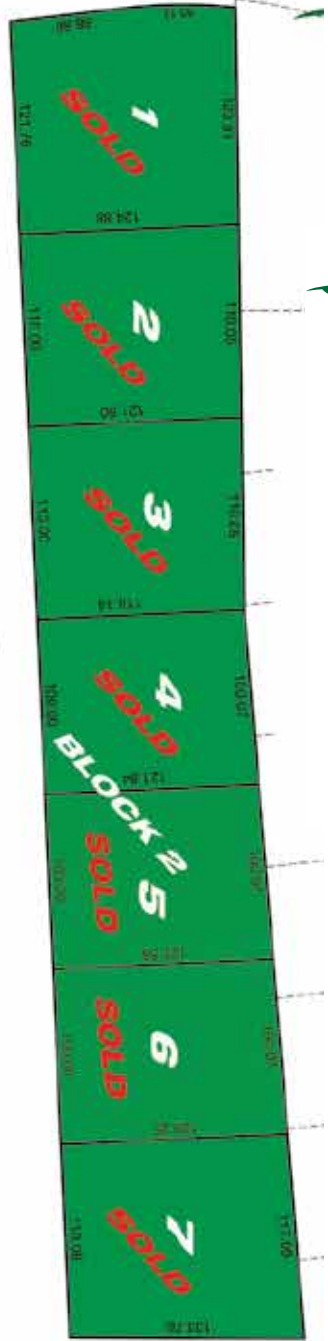
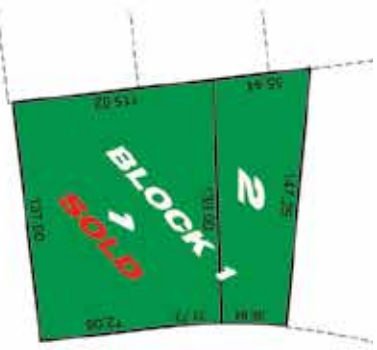
### **Goose River Realty**

Gary Leraas, Realtor 701-430-1775

[www.gooseriverrealty.webs.com](http://www.gooseriverrealty.webs.com)

*Map on Reverse*

# PRairie View



8TH STREET



Goose River Realty, Gary Leradas, Broker/Owner • 701-430-1775 • hillsborond.com



LOTS FOR SALE